



MAINTENANCE BUILDING REPAIR

ELLIS PARK

CEDAR RAPIDS, IOWA

COPYRIGHT PROTECTION UNDER FEDERAL LAW (TITLE 17, U.S. CODE)

Above low limits the use of this document (drawing/spec) to this specific project only, and duplication, whole or in part for use on other than this project is prohibited.



PROJECT LOCATION MAP

SHEET INDEX		
SHEET NUMBER	REV. NO.	SHEET TITLE
G000	0	TITLE SHEET
S100	0	GROUND FLOOR PLAN
S101	0	REPAIR DETAILS

NO.	REVISION	DATE
0	ISSUED FOR BID	7/23/18



OWNER
CITY OF CEDAR RAPIDS
CEDAR RAPIDS, IA.

PROJECT
MAINTENANCE BUILDING REPAIR
ELLIS PARK
CONTRACT # 081300-02

SHEET TITLE
TITLE SHEET

PROJECT NUMBER
18154
DATE 7/23/18
DRAWN DAA
CHKD TJR
APPROV. TJR

SHEET NUMBER
G000

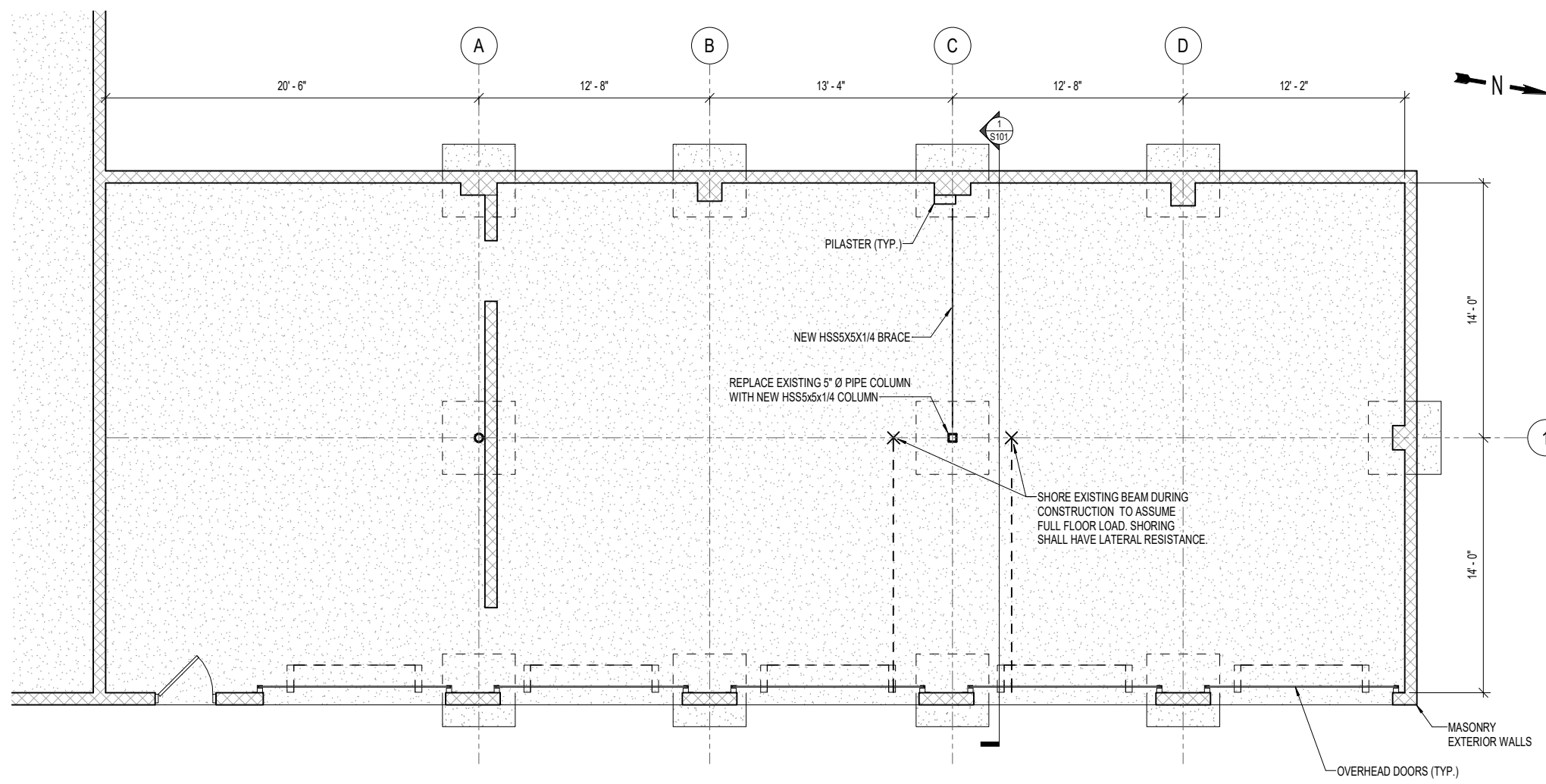


COPYRIGHT PROTECTION UNDER FEDERAL LAW (TITLE 17, U.S. CODE)

Above the limits the use of this document (drawing/figure) to this specific project only, and duplication whole or in part for use on other than this project is prohibited.

R:\Projects\2018\18154 City of Cedar Rapids Maintenance Bldg\Central Files\18154 City of Cedar Rapids Maintenance Bldg.rvt

7/23/2018 2:25:17 PM



1 GROUND FLOOR
1/4" = 1'-0"

GENERAL NOTES

1. CONTRACTOR TO VERIFY ALL DIMENSIONS PRIOR TO CONSTRUCTION.
2. BRACE AND COLUMN ADDED PER RECOMMENDATIONS OF TERRACON INC.
3. PROVIDE A METHOD TO SPREAD LOAD WHEN USING SHORING COLUMNS.
4. SIZE AND LOCATION OF FOUNDATIONS ARE UNKNOWN. THESE ARE ASSUMED TO BE SUFFICIENT FOR EXISTING AND ASSUMED LOADS.

STRUCTURAL STEEL

1. MATERIALS:
 WIDE FLANGE - ASTM A992
 OTHER ROLLED SECTIONS - ASTM A36
 PLATES - ASTM A36
 SQUARE/RECTANGULAR HSS - ASTM A500 GR. B
 ROUND HOLLOW STRUCTURAL SECTIONS - ASTM A500 GR. B
 STANDARD STEEL PIPE - ASTM A53 GR. B
 RAISED-PATTERN FLOOR PLATE - ASTM A786 COMMERCIAL GRADE
 STEEL CONNECTION BOLTS - ASTM A325N (TYP.) OR ASTM A490N
 WELD MATERIAL - AWS A5.1 E70XX
 ANCHOR BOLTS - ASTM F1554 GR. 36
 STAINLESS STEEL SHAPES - ASTM A276 TYPE 304 Fy = 30 KSI
 HEADED WELDED STEEL STUDS - ASTM A108, TYPE B
 HEAVY HEX NUTS - ASTM A563
 WASHERS - ASTM F436
2. FABRICATION AND ERECTION TO BE IN ACCORDANCE WITH AISC SPECIFICATIONS
3. BEAM CONNECTIONS ARE TO BE EQUAL TO OR GREATER THAN ONE HALF THE UNIFORM LOAD CAPACITY OF THE BEAM. THE LENGTH OF CONNECTION ANGLES SHALL NOT BE LESS THAN HALF THE "T" DISTANCE OF THE BEAM WEB. ALL MAJOR BOLTED CONNECTIONS ARE TO BE BEARING TYPE CONNECTIONS USING DOUBLE CLIP ANGLES AND 3/4" Ø ASTM A-325N BOLTS AND NUTS UNLESS NOTED OTHERWISE.
4. FIELD CUTTING OR OTHER FIELD MODIFICATIONS TO STRUCTURAL STEEL SHALL NOT BE MADE WITHOUT SPECIFIC PRIOR WRITTEN APPROVAL OF THE ENGINEER
5. ALL STRUCTURAL STEEL PLAN DIMENSIONS ARE TO CENTER LINE OF BEAMS AND COLUMNS AND TO THE BACK OF CHANNELS AND ANGLES, U.N.O. FOR HORIZONTAL BRACING, ELEVATIONS ARE GIVEN TO THE TOP OF THE STRUCTURAL MEMBER
6. THE CENTER OF GRAVITY OF BRACES AND SUPPORT MEMBERS ARE TO INTERSECT IN A MANNER TO AVOID ECCENTRICITY WHERE PRACTICAL; OTHERWISE FASTENERS AND SUPPORT MEMBERS ARE TO ACCOMMODATE STRESS DUE TO ECCENTRICITY, INCLUDING PRYING ACTION IN FRAMING ANGLES OR FLANGED GUSSETS
7. CAPACITY OF CONNECTIONS FOR BRACING MEMBERS TO BE CAPABLE OF DEVELOPING THE NET SECTION STRENGTH OF THE MEMBERS IN COMPRESSION, U.N.O.
8. ALL WELDING AND TESTING OF WELDS SHALL BE IN ACCORDANCE WITH THE LATEST AWS CODES AND RECOMMENDATIONS AND SHALL BE COMPLETED BY AWS QUALIFIED WELDERS WITH CURRENT AWS CERTIFICATION
9. WELDING ELECTRODES SHALL BE IN ACCORDANCE WITH AWS D1.1 AWS A5.1 OR A5.5; E70XX ARE GENERALLY REQUIRED FOR SHIELDED-METAL ARC WELDING; AWS A5.17 OR AWS A5.23, F7X-EXXX FOR SUBMERGED ARC WELDING; AWS A5.18, E70S-X FOR GAS METAL ARC WELDING; AND AWS A5.0 E7XT.X FOR FLUX-CORED ARC WELDING
10. FABRICATION AND ERECTION WELDING TECHNIQUES SHALL CONFORM TO AWS D1.1; WELDERS SHALL BE QUALIFIED AND CERTIFIED TO PERFORM THE WORK REQUIRED IN ACCORDANCE WITH AWS D1.1 OR SIMILAR REQUIREMENTS
11. UNLESS NOTED OTHERWISE, ALL WELDS SHALL BE CONTINUOUS 3/16" FILLET WELDS
12. ALL BASE PLATES SUPPORTING STEEL COLUMNS SHALL BE GROUTED SOLID WITH HIGH STRENGTH (8,000 PSI MIN.), NON-SHRINK GROUT IMMEDIATELY AFTER STRUCTURAL STEEL IS IN PLACE AND PLUMB AND PRIOR TO PLACING ANY CONCRETE FOR THE ELEVATED FLOORS SUPPORTED BY THE RESPECTIVE COLUMNS
13. UPON COMPLETION OF INSTALLATION OF ALL ITEMS TO BE FIELD PAINTED, ALL PAINTED SURFACES DAMAGED DURING CONSTRUCTION AND ALL FIELD WELDED AREAS SHALL BE PREPPED IN ACCORDANCE WITH PAINT MANUFACTURER'S RECOMMENDATIONS. FIELD APPLY THE SPECIFIED PAINT SYSTEM IN ACCORDANCE WITH MANUFACTURER'S RECOMMENDATIONS TO PROVIDE A CLEAN UNIFORM APPEARANCE
14. DAMAGE TO ANY GALVANIZED MATERIAL SHALL BE TOUCHED UP AS REQUIRED WITH A ZINC RICH PAINT
15. GRATING SHALL BE 1 1/4" X 3/16" 19-W-4 OR EQUAL, ATTACHED WITH CLIPS PER MANUFACTURER'S REQUIREMENTS, U.N.O. INTERIOR GRATING SHALL BE PRIMED AND PAINTED PER OWNER SPECIFICATIONS, EXTERIOR GRATING SHALL BE SERRATED AND GALVANIZED. GRATING SHALL BE FABRICATED SO THAT CROSS BARS OF ADJACENT PANELS ARE ALIGNED WHEN INSTALLED. EACH HOLE OR OPENING GREATER THAN 8" SHALL BE Banded WITH 1 1/4" X 3/16" BAND WELDED TO CUT PORTIONS OF GRATING
16. STRUCTURAL STEEL FINISH TO BE PER OWNERS SPECIFICATIONS



NO.	REVISION	DATE
0	ISSUED FOR BID	7/23/18

Shoemaker Haaland
www.shoemaker-haaland.com

OWNER
CITY OF CEDAR RAPIDS
CEDAR RAPIDS, IA.

PROJECT
MAINTENANCE BUILDING REPAIR
ELLIS PARK
CONTRACT # 081300-02

SHEET TITLE
GROUND FLOOR PLAN

PROJECT NUMBER
18154
DATE 7/23/18
DRAWN DAA
CHKD TJR
APPROV. TJR

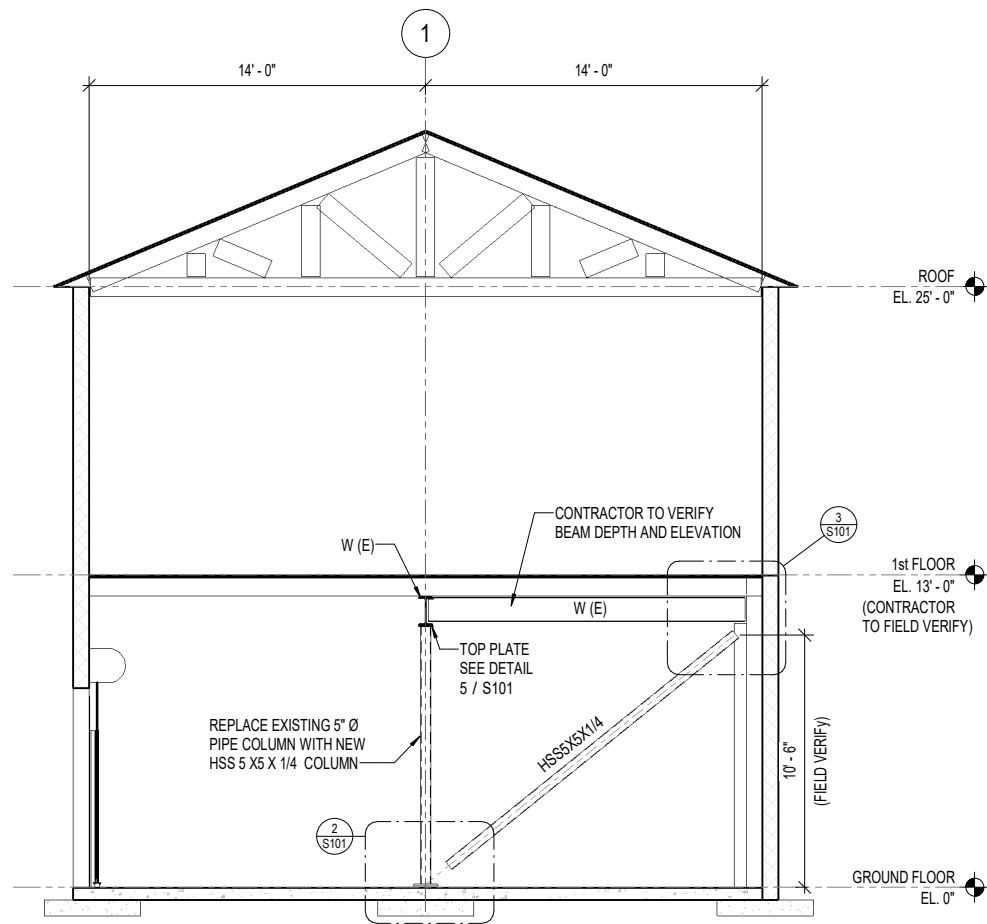
SHEET NUMBER
S100



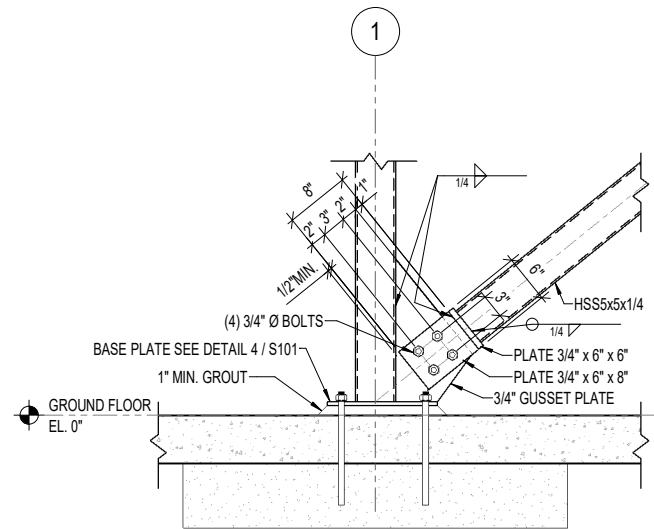
COPYRIGHT PROTECTION UNDER FEDERAL LAW (TITLE 17, U.S. CODE). Above the limits the use of this document (drawing/diagram) to this specific project only, and duplication whole or in part for use on other than this project is prohibited.

R:\Projects\2018\18154 City of Cedar Rapids Maintenance Bldg\Central Files\18154 City of Cedar Rapids Maintenance Bldg.rvt

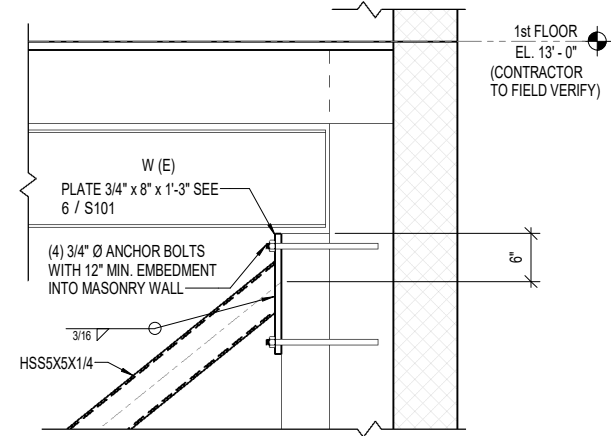
7/23/2018 2:25:18 PM



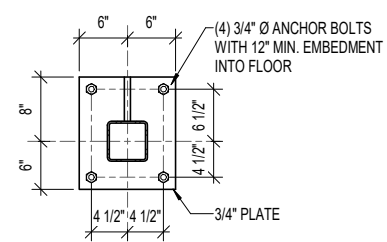
1 BUILDING SECTION ALONG GRID C
1/4" = 1'-0"



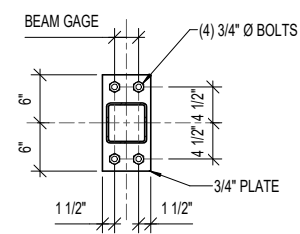
2 BRACE CONNECTION AT BASE PLATE
1" = 1'-0"



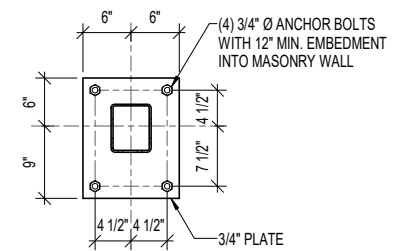
3 BRACE CONNECTION AT WALL
1" = 1'-0"



4 COLUMN BASE PLATE DETAIL
1" = 1'-0"



5 TOP PLATE DETAIL
1" = 1'-0"



6 TUBE BRACE END PLATE DETAIL
1" = 1'-0"



NO.	REVISION	DATE
0	ISSUED FOR BID	7/23/18



OWNER
CITY OF CEDAR RAPIDS
CEDAR RAPIDS, IA.

PROJECT
MAINTENANCE BUILDING REPAIR
ELLIS PARK
CONTRACT # 081300-02

SHEET TITLE
REPAIR DETAILS

PROJECT NUMBER
18154
DATE 7/23/18
DRAWN DAA
CHKD TJR
APPROV. TJR

SHEET NUMBER
S101

